



# 2024 CONSTRUCTION SPECIFICATIONS

## A PACK – FRAMING PACK

### FLOOR SYSTEM OPTIONS

- △ ~~11-7/8"~~<sup>9.5"</sup> I-Joists, 9.5" LVL beam with posts.
- △ 3/4" T&G OSB floor decking glued and fastened with ring shank nails

### EXTERIOR WALL FRAMING

- △ 2x6 Framing @ 16" O.C.
- △ 8'-1 1/8" Wall Height
- △ 7/16" OSB sheathing applied to walls.
- △ CertainTeed® Restoration DBL 4 Classic™ vinyl siding (.044" thickness)
- △ Insulated window and door headers sized per code/per opening
- △ Blocking installed on each side of window and door headers
- △ Typar House wrap

### INTERIOR WALL FRAMING

- △ 2X4 framing per plan @ 16" O.C.

### WINDOWS

- △ Sierra Pacific® vinyl (Dependent on what's drawn on the plan.)

### ROOF SYSTEM

- △ Engineered roof trusses @ 24" O.C. with 12" energy heel
- △ ~~6/12 Roof Pitch~~ **6/12 & 8/12 Roof Pitch**
- △ 1/2" OSB roof sheathing w/ metal 'H' Clips
- △ 2x6 subfascia
- △ Rollex® Wood grain aluminum fascia material
- △ Rollex® aluminum soffit material
- △ Aluminum 'D' edge
- △ Ice and water shield
- △ Synthetic Underlayment
- △ CertainTeed® Landmark shingles
- △ Shingle over vent.

### EXTERIOR DOORS

- △ Painted Waudena Steel®
- △ Front: S866F, Clad Frame, Painted on both sides.
- △ H2G: SF31F, 20 min Fire, Clad Frame, Painted both sides.
- △ Service: S31F, Clad Frame, Painted on both sides.
- △ Additional door (Laundry, Great room, Dining, etc.) S21, Clad Frame, Painted on both sides.
- △ Clad OHD Jambs: Narrow, w/ composite backer.
- △ Schlage® door hardware



## 2024 CONSTRUCTION SPECIFICATIONS

### B PACK – FINISH PACK

#### INTERIOR DOORS AND TRIM

- △ Western Building Products® Painted Poplar 238 (7/16 x 3-1/4) Base and 157 (9/16 x 2-1/4") Casing
- △ Western Building Products® 3-panel Painted 3 panel SDF (W591)
- △ Schlage® door hardware
  - Privacy locks – bedrooms and bathrooms
  - Passage locks – all other doors
- △ White vinyl wrapped shelving

#### CABINETS AND COUNTERTOPS

- △ Merillat® Marlin Painted Maple
- △ Laminate triple-cove countertops with 3" back-splash

#### LIGHTING

- △ This needs to be discussed

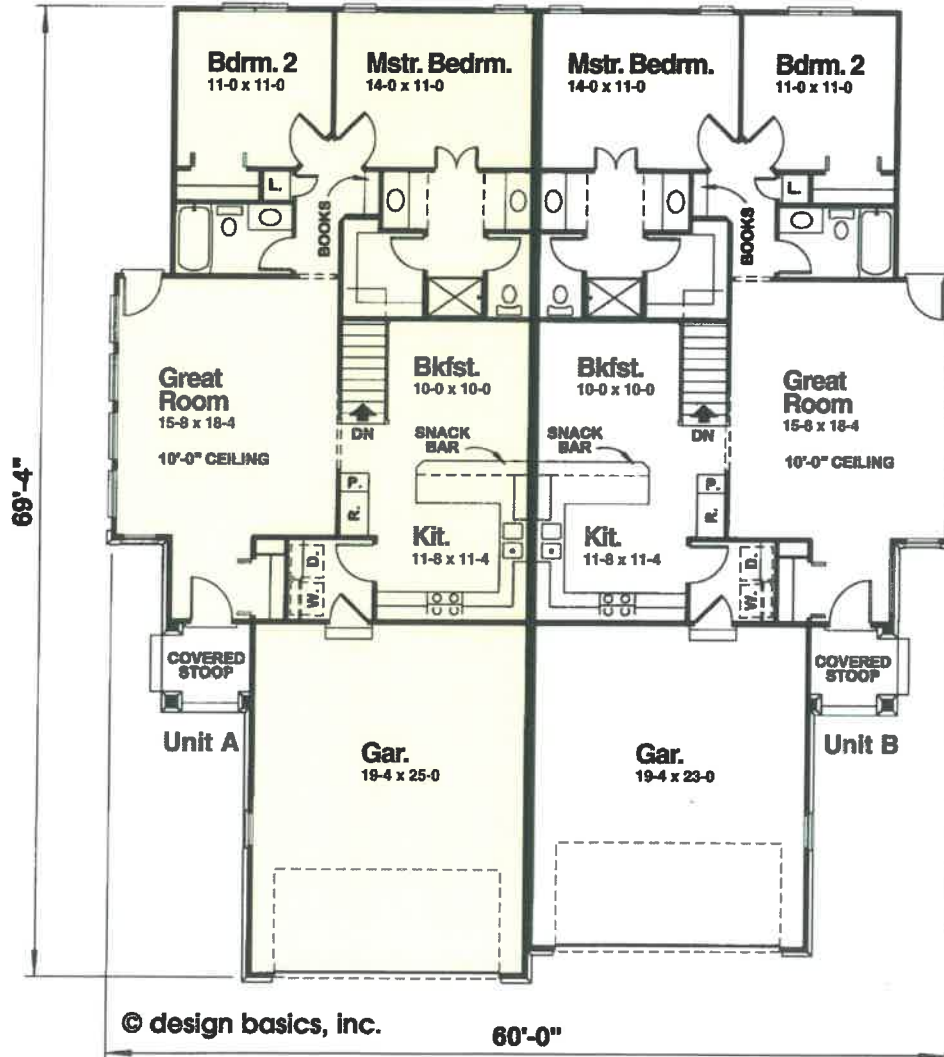
#### PLUMBING

- △ 8" deep stainless steel drop-in sink with basket strainers
- △ Moen® Sleek chrome kitchen faucet with pull-out sprayer
- △ Mansfield® Vitreous china self-rimming lavatory sink at bathrooms
- △ Moen® single lever chrome vanity faucets with pop-up drain mechanism
- △ Mansfield® vitreous china water closet – 1.6-gallon water saver
- △ Aker one-piece AcrylX™ fiberglass tubs/showers GB60/ (per plan)
- △ Moen® single lever chrome tub/shower faucet with temperature pressure balancing
- △ Moen® chrome towel bar and tissue holder in each bathroom

# Deerfield

**MODEL 4614**  
 2 Bedrooms • 2 Baths  
 One Story  
 2-Car Garage

Length.....60'-0"  
 Depth .....69'-4"  
 Total Area.....2,436 sq. ft.



# Allston

**MODEL 7603**  
 3 Bedrooms • 2 Baths  
 One Story  
 2-Car Garage

Length.....69'-4"  
 Depth .....58'-4"  
 Total Area.....2,622 sq. ft.

